

ILLUMINATING EVERY NICHE



SMART SERIES





البابطين للطاقة و الاتصالات
AL-BABTAIN POWER & TELECOM

SMART SERIES

Al Babtain **Smart Series** offers a high level of performance while providing wide distribution of the light to meet enterprise, service provider, and small-and-medium business organization expectations.

The Smart Series is also CE marked ensuring the compliance with the European legislation, for verifying all the fundamental safety, health and environmental protection requirements. They are versatile street light luminaires, aesthetically designed with dedicated facet optics to optimize the beam control and to achieve an excellent lighting level.

Technical Data Chart

Luminaire Type	Lamp					Weight	Windage Area
	HPM	HPS	MH			KG	
SMART 04	-	1000W	1000W		X	22.50	0.176 M ²
	-	600W	600W		X	20.35	
SMART 05	250W	-	-	X		12.7	0.148 M ²
	-	250W	-	X	X	13.3	
	-	400W	-		X	15.0	
	-	-	400W		X	15.0	
	-	600W	-		X	17.3	
SMART 06	-	100W	-	X	X	8.4	0.10 M ²
	-	150W	150W	X	X	9.7	
	250W	-	-	X		9.8	
	-	250W	-	X	X	9.9	
	-	-	250W	X	X	9.9	
SMART 07	-	70W	70W			4.5	0.056 M ²
	80W	-	-			5.1	
	-	100W	100W			5.6	
	-	110W	-			5.2	
	125W	-	-			5.3	
	-	150W	150W			6.0	

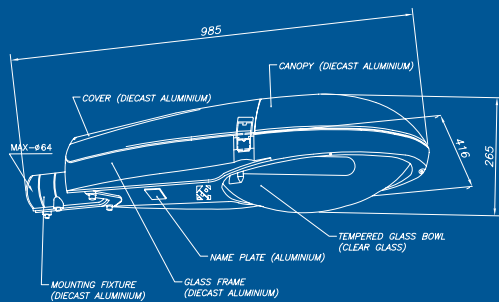
IP Chart

LUMINAIRE	IP	
	OPTICAL COMPARTMENT	CONTROL GEAR COMPARTMENT
SMART 04	66	66
SMART 05	66	66

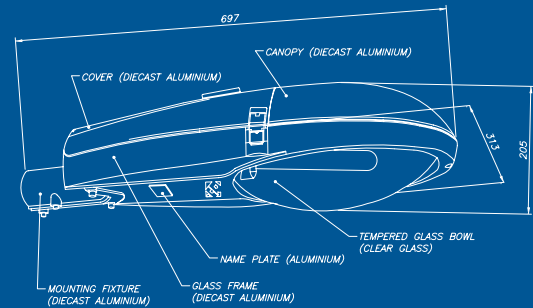
LUMINAIRE	IP	
	OPTICAL COMPARTMENT	CONTROL GEAR COMPARTMENT
SMART 06	66	66
SMART 07	66	66



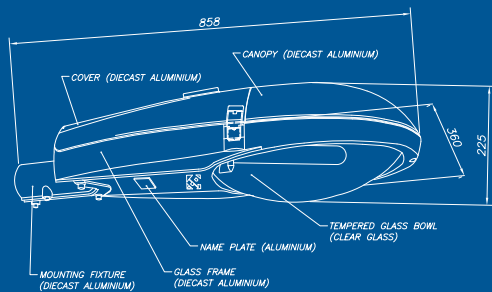
SMART SERIES



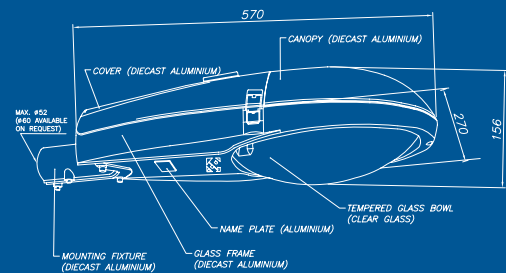
SMART 04



SMART 06



SMART 05



SMART 07

Application

It is used for illuminating express, major, collector, local, and service roads, and more.

Construction Features

Construction

It is built of die cast aluminum alloy that is made of canopy, glass frame and mounting fixture, finished in electrostatic powder paint and it has a Stainless Steel self-locking prop. The aluminum-glass construction gives a solid expression to the design of the lantern.

With optimal climate conditions, it enables a compact shape as required from a design perspective. It has a high heat resistant tempered glass bowl, side entry mounting, and easy access to all the electrical components from the topside without disturbing the lamp. Lamp setting can be varied horizontally and vertically. The 'plug & play' lamp holder adaptor makes lamp replacement simple. The die cast aluminum lamp holder adaptor and housing adjustable lamp setting enable achieving better output.

Optical system

Reflector

A one-piece reflector is used separately with a computer designed seamless optic, which will concentrate light exactly where it is needed. It is made of a very high purity aluminum alloy that is chemically polished, anodized and sealed.

Fine adjustment of the lamp in both the horizontal and vertical planes gives precise beam control to meet all design configurations.

Voltage system

220/ 230/ 240V

50-60 Hz

Other voltages are available on request.

Electrical Class

Class – I



www.al-babtain.com.sa



البابطين للطاقة و الاتصالات
AL-BABTAIN POWER & TELECOM